

New York State Office for People with Developmental
Disabilities

Family Support Services Grant Programs

Respite, Family Training, Advocacy, Counseling & Support Services,
Crisis Intervention, Voucher Reimbursement, Senior Day Programs,
Recreation, Non-Medicaid Service Coordination

Long Island Developmental Disabilities Service Office
415A Oser Avenue
Hauppauge, NY 11788
(631) 434-6100
<http://www.opwdd.ny.gov>

The grant list is available on line at www.lifssac.com

Revised: December 2020

TABLE OF CONTENTS

<u>CATEGORY</u>	<u>PG. NUMBERS</u>
Introduction	3
After School/Respite Programs	4-10
School Vacation Respite	11-14
Crisis Intervention	15-19
Family Counseling, Training & Advocacy	20-23
Parent Training for Parents with a D.D.	24
In-Home Respite	25-27
Overnight Freestanding Respite	28-30
Weekend & Recreation Respite	31-42
Sibling Support	43
Town Recreation	44-47
Voucher Reimbursement	48-51
Non-Medicaid Service Coordination	52-55



INTRODUCTION

This is a comprehensive listing of all Family Support Grants in Nassau and Suffolk Counties. Services are funded by the New York State Office for People with Developmental Disabilities (OPWDD) through the local Long Island Developmental Disabilities Services Office (L.I.D.D.S.O.). The programs help developmentally disabled Long Islanders and their families.

Developmental Disabilities include mental retardation, neurological impairment, epilepsy, cerebral palsy and autism. Participating individuals must meet the OPWDD eligibility criteria. Eligibility information is available on the OPWDD website under General Information & Publications/Forms.

THE FOLLOWING IS A BRIEF DESCRIPTION OF THE SERVICES THAT ARE PROVIDED:

After School & Weekday Respite Program & School Vacation Respite: Provides services to developmentally disabled children or adults for several hours up to 5 days a week.

Crisis Intervention: Services include behavioral assessment and intervention; training of families; linkage and referral; emergency in-home and out-of-home respite.

Parent Training for Parents with a D.D: Provides parent skills and training for parents with developmental disabilities.

Family Counseling, Training & Advocacy: Provides counseling, training, behavior management and advocacy services for the family and the developmentally disabled person, at the agency site or in the home.

In-Home Respite: Matches trained respite workers with families to provide scheduled care for individuals with developmental disabilities in their homes.

Overnight Freestanding Respite: Scheduled respite in certified agency operated respite homes, weekends or weekdays.

Respite Recreation: Provides care through recreation and social activities at various agencies in Nassau and Suffolk Counties.

Sibling Support: Provides services to siblings through support groups, individual counseling or recreational activities.

Town Recreation: Provides recreation and social activities to town residents with developmental disabilities.

Voucher/Reimbursement: Families are reimbursed for purchased goods or services for their developmentally disabled person which cannot be funded through other resources. Services in the grant are not reimbursable.

Non-Medicaid Service Coordination: Short term service coordination to assist developmentally disabled individuals with the planning for and accessing of desired services and supports.



AFTER SCHOOL & WEEKDAY RESPITE PROGRAMS

AGENCY	LOCATION	SERVICE HOURS	POPULATION SERVED	FEE	COMMENTS	CONTACT PERSON
After School Respite Program & Weekday Respite: Provides services to developmentally disabled children or adults for several hours up to 5 days a week.						
A-1 Universal Care, Inc.	Yes We Can Community Center, 141 Garden Street, Westbury, NY 11590	Tuesdays, Wednesdays, & Fridays 3pm-6pm	Ages: 7 and up Developmentally Disabled	No Fee	Nassau County Increase their socialization and interpersonal skills through sports, games, art and crafts, music and other activities.	Nancy C. Parada, 516-338-8777 x14 nparada@a1universalcare.org
Association for Children with Down Syndrome (ACDS)	4 Fern Place Plainview	Mondays 6-8pm	Ages: 13 years & up Down Syndrome & Developmentally Disabled	No Fee	Nassau & Suffolk Counties Dance Class – Ballet, tap, jazz and modern techniques	Erica Lepurage 516-605-2391 elepurage@acds.org Brian Laubis 516-605-2391 blaubis@acds.org
Association for Children with Down Syndrome (ACDS)	270 Washington Ave., Plainview	Thursdays 6-9pm	Ages: 15 years & up Down Syndrome & Developmentally Disabled Teen program	Fee	Nassau & Suffolk Counties Mix of sessions in the community and at ACDS.	Erica Lepurage 516-605-2391 elepurage@acds.org Brian Laubis 516-605-2391 blaubis@acds.org
Adults & Children with Learning Disabilities (ACLD)	Levittown Site Based Respite 2934 Hempstead Turnpike, Levittown, NY 11756	Thursdays & Fridays 3:30–7:30pm (dinner is provided)	Ages: 21 years & up Developmentally Disabled	No Fee	Operates all year round, excluding certain holidays. The program offers an opportunity to socialize & engage in activities of their choice: in-house, leisure, recreational and selected community outings.	Rodlane Bien Aise 516-336-5909 ext.209 bienaiser@aclid.org



AFTER SCHOOL & WEEKDAY RESPITE PROGRAMS

AGENCY	LOCATION	SERVICE HOURS	POPULATION SERVED	FEE	COMMENTS	CONTACT PERSON
--------	----------	---------------	-------------------	-----	----------	----------------

After School Respite Program & Weekday Respite: Provides services to developmentally disabled children or adults for several hours up to 5 days a week.

<p>Adults & Children with Learning Disabilities (ACLD)</p>	<p>Main Location: Spiegel Children’s Center located at 67 Greenwood Road Bay Shore NY 11706 or Our Satellite Location at The Great South Bay YMCA located at 200 West Main St Bay Shore NY 11706</p>	<p>Mon.-Fri. 2:30 pm–5:45 pm</p>	<p>Ages: 5–21 years Developmentally Disabled</p>	<p>No Fee</p>	<p>Nassau & Suffolk counties; transportation may be provided by a child’s school district to the program, with parent pick-up upon dismissal. Our program is a Therapeutic Recreation based program. Our main goal is working on promoting socialization between peers and facilitating interactions with others. Includes a 6-week summer session option. Our After-School site at the Great South Bay YMCA provides a potential inclusive setting option for children 6-9 years old.</p>	<p>Linda Eisen 631-647-9577 x232 eisenl@alcd.org</p>
--	--	--------------------------------------	--	---------------	--	---



AFTER SCHOOL & WEEKDAY RESPITE PROGRAMS

AGENCY	LOCATION	SERVICE HOURS	POPULATION SERVED	FEE	COMMENTS	CONTACT PERSON
--------	----------	---------------	-------------------	-----	----------	----------------

After School Respite Program & Weekday Respite: Provides services to developmentally disabled children or adults for several hours up to 5 days a week.

East End Special Players	Bridge Hampton Senior Center 585 Sag Harbor Turnpike Bridge Hampton	Thursdays 4pm – 7:30pm	Adults Developmentally Disabled	No Fee	Explore different arts such as sculpture, painting, dance and cooking. No transportation. Not Bilingual. Wheelchair Assessable Accepts individuals enrolled in Self Direction	Matthew Kuriloff 631-320-6099 mkuriloff@icloud.com Jacqui Leader 631-678-7560 jbubbuster@aol.com
--------------------------	---	---------------------------	------------------------------------	--------	--	---



AFTER SCHOOL & WEEKDAY RESPITE PROGRAMS

AGENCY	LOCATION	SERVICE HOURS	POPULATION SERVED	FEE	COMMENTS	CONTACT PERSON
--------	----------	---------------	-------------------	-----	----------	----------------

After School Respite Program & Weekday Respite: Provides services to developmentally disabled children or adults for several hours up to 5 days a week.

Economic Opportunity Council (EOC)	320 Carlton Avenue Suite 7800 Central Islip	Mondays, Fridays 2:00 pm-6:00pm	Ages: 21 years & up Developmentally Disabled	No Fee	To provide after school respite to individuals with developmental disabilities. The program will foster the opportunity of learning through athletics, arts and crafts and community involvement. The Hourly Respite program provided out of home activities to individuals after school/program.	Simone Holder 631-666-6471 x602 sholder@eoc-suffolk.com Cicely Hobbs 631-666-6471 x635 chobbs@eoc-suffolk.com
Family Counseling Services - a division of Family Services League	23 Frowein Road, Center Moriches le	Social Skills Program runs 8 sessions at a time and 3 times per year. Mondays 6p-7p	Ages: 5-18 years Developmentally Disabled	No fee	Expanding on social skills for children-offered in conjunction with parent support group (not required but recommended) Does not accept individuals enrolled in self direction	Brianna Palisi 631-998-0016 Brianna.Palisi@fsl-li.org
Family Residences & Essential Enterprises, Inc. (FREE)	1404 Stony Brook Road, Stony Brook NY 11790	Mon.-Fri. Afternoons 2:00pm – 5pm	Ages: 12 years & up Developmentally Disabled	No Fee	Suffolk County Only Transportation on limited basis	Kelly Stumper Kstumper01@familyres.org Office: 631-273-4098 Cell: 516-492-6298
Family Residences & Essential Enterprises, Inc. (FREE)	120 Plant Avenue Hauppauge	Mon.-Fri. Afternoons 2:00pm – 5pm	Ages: 12 years & up Developmentally Disabled	No Fee	Suffolk County Only Transportation on limited basis	Kelly Stumper Kstumper01@familyres.org Office: 631-273-4098 Cell: 516-492-6298



AFTER SCHOOL & WEEKDAY RESPITE PROGRAMS

AGENCY	LOCATION	SERVICE HOURS	POPULATION SERVED	FEE	COMMENTS	CONTACT PERSON
--------	----------	---------------	-------------------	-----	----------	----------------

After School Respite Program & Weekday Respite: Provides services to developmentally disabled children or adults for several hours up to 5 days a week.

Eden II/Genesis	600 Newbridge Rd East Meadow, NY 11554	Mondays & Thursdays 3pm-5pm	Ages: 5-21 years	\$15 per day	Nassau & Suffolk Counties. Transportation not provided. Activities include: games, fitness/exercise, arts and crafts, gym/outdoor time, recreation, leisure, and cooking.	Jillian Panni 516-937-1397 x1311 jpanni@eden2.org
Mill Neck Services	40 Frost Mill Rd Mill Neck NY 11765.	Thursdays 6-8:30pm	Deaf & Developmentally Disabled	No Fee	Nassau & Suffolk Counties Literacy Program Accepts individuals enrolled in self direction	Loretta Murray 516-922-3818 deafesq@millneck.org John Saal 516-322-4003 jsaal@millneck.org
SCO Family of Services Drop-in Lounge	117 Comac St., Ronkonkoma	Tuesday & Thursdays 5:30-8:30 pm	Ages: 21 years & up Developmentally Disabled adults living at home	No fee	Drop-in Lounge offers art, music, and games for adults who need minimal supervision. Visitors can participate in activities or relax and socialize. Wheelchair accessible	Donna Delarosa 631-639-3610 ddelarosa@sco.org
Sid Jacobson Jewish Community Center	300 Forest Drive East Hills	Mon. - Fri. 2:30-5:30pm Fri. 2:30-5:15pm Closed on school holidays & vacations. Follows Roslyn school calendar	Ages: 5-21 years Developmentally Disabled and Autistic Children	No Fee	Nassau & Suffolk Counties Wheelchair Accessible Daily movement class, music, art, cooking, pet therapy and other social and daily life skill classes.	Amanda Burns 516-484-1545 x175 aburns@sjcc.org



AFTER SCHOOL & WEEKDAY RESPITE PROGRAMS

AGENCY	LOCATION	SERVICE HOURS	POPULATION SERVED	FEE	COMMENTS	CONTACT PERSON
--------	----------	---------------	-------------------	-----	----------	----------------

After School Respite Program & Weekday Respite: Provides services to developmentally disabled children or adults for several hours up to 5 days a week.

United Cerebral Palsy Association of Greater Suffolk County (UCP of Suffolk)	250 Marcus Blvd. Hauppauge	Mondays & Wednesdays 3:00pm-6:00pm	Developmentally Disabled Adults	No Fee	Suffolk County Only Adapted Creative Arts Accepts individuals enrolled in self direction	Joan Sarrica 631-232-0011 x638 jsarrica@ucp-suffolk.org
United Cerebral Palsy Association of Greater Suffolk County (UCP of Suffolk)	250 Marcus Blvd. Hauppauge	3:00pm-6pm Mondays & Wednesdays	Developmentally Disabled 18+	No Fee	Suffolk County Only. Athletic Program. Accepts individuals enrolled in self direction	Joan Sarrica 631-232-0011 x638 jsarrica@ucp-suffolk.org
YAI -National Institute for People w/Disabilities (YAI/NIPD)	555 Washington Ave. Brentwood NY 11717 217 Middle Country Road, Coram, NY 11727	Mon-Fri. Brentwood 2:45pm-5:30pm Coram 2:00pm-5:30pm	Ages: 13-21 years Developmentally Disabled – Suffolk County	No Fee	Provides leisure and recreational activities, as well as supervision for children with IDD. Our overall objective is to provide social opportunities for children and give families a reprieve from their daily care giving responsibilities. Accepts individuals enrolled in self direction	Lisa Rasmussen Brentwood # 631-967-7121 Coram # 631-230-1003 Lisa.Rasmussen@yai.org



AFTER SCHOOL & WEEKDAY RESPITE PROGRAMS

AGENCY	LOCATION	SERVICE HOURS	POPULATION SERVED	FEE	COMMENTS	CONTACT PERSON
--------	----------	---------------	-------------------	-----	----------	----------------

After School Respite Program & Weekday Respite: Provides services to developmentally disabled children or adults for several hours up to 5 days a week.

YAI -National Institute for People w/Disabilities (YAI/NIPD)	Broader Horizons 555 Washington Ave. Brentwood NY 11717 217 Middle Country Road, Coram, NY 11727	Brentwood - Tuesday & Friday: 5:30pm – 9:30pm Coram -Mondays &Wednesdays 5:30pm – 9:30pm	Adults Autism Spectrum and/or Mild Developmental Disability	No Fee	Community based recreational program that offers the opportunity for individuals to make friends and socialize through group activities. Provides a supportive and supervised environment in which participants can expand their social circles and become active members of the community. Accepts individuals enrolled in self direction	Lisa Rasmussen Brentwood # 631-967-7121 Coram # 631-230-1003 Lisa.Rasmussen@yai.org
--	--	---	---	--------	--	--



SCHOOL VACATION RESPITE

AGENCY	LOCATION	SERVICE HOURS	POPULATION SERVED	FEE	COMMENTS	CONTACT PERSON
<u>After School/Respite Program & School Vacation Respite:</u> Provides services to developmentally disabled children or adults for several hours up to 5 days a week.						
Adults & Children w/Learning & Developmental Disabilities (ACLD)	Great South Bay YMCA 67 Greenwood Rd. Bay Shore	Mon.-Fri. 9am-4pm 6 week session – end of June – early August	Ages: 15-17 years Developmentally Disabled	\$400	Nassau & Suffolk Counties Counselor in Training Day Camp experience Parents provide transportation	Linda Eisen 631-647-9577 x232 eisenl@acld.org
Adults & Children with Learning & Developmental Disabilities (ACLD)	Great South Bay YMCA 200 W. Main Street/ 67 Greenwood Rd. Bay Shore	Mon.-Fri 9am-4pm 3 week session June/July or July/August	Ages: 6-12 years Developmentally Disabled	\$300	Nassau & Suffolk Counties Summer Day Camp experience. Parents Provide transportation	Linda Eisen 631-647-9577 x232 eisenl@acld.org
Adults & Children with Learning & Developmental Disabilities (ACLD)	Great South Bay YMCA 200 W. Main St. Bay Shore	School Vacations Select Days 9am – 4pm	Ages 5-10 years Developmentally Disabled Children	\$60	Nassau & Suffolk Counties Day Camp Experience Parents provide transportation	Linda Eisen 631-647-9577 x232 eisenl@acld.org
Adults & Children with Learning & Development Disabilities (ACLD)	Y-JCC 74 Hauppauge Rd. Commack	Feb/Apr School Vacation 9am-3pm Select Days	Ages 5-10 years Developmentally Disabled Children	\$60	Nassau & Suffolk Counties Day Camp Experience Parents provide transportation	Linda Eisen 631-647-9577 x232 eisenl@acld.org



SCHOOL VACATION RESPITE

AGENCY	LOCATION	SERVICE HOURS	POPULATION SERVED	FEE	COMMENTS	CONTACT PERSON
--------	----------	---------------	-------------------	-----	----------	----------------

After School/Respite Program & School Vacation Respite: Provides services to developmentally disabled children or adults for several hours up to 5 days a week.

Brookville Center for Children's Services	189 Wheatley Rd. Brookville	Christmas/winter break, Easter/Passover break, & 1 week in August 10am-3pm	Ages: 5-21 years Developmentally Disabled children	\$200 per session	Nassau & Suffolk Counties Respite during school holidays Wheelchair Accessible Does not accept individuals enrolled in self direction	Denise Gaughan 516-626-1075 x 3364 dgaughan@brookvillecenter.org
Developmental Disabilities Institute (DDI) Project SOAR	90 Air Park Drive Ronkonkoma	All School Breaks/Holidays Hours vary Center-based Program	Ages: 3 to 7 years	No fee	Nassau & Suffolk Counties. No transportation	Christine Racca 631-580-4004 christine.racca@ddiny.org
Family Residences & Essential Enterprises, Inc. (FREE)	191 Sweet Hollow Road Old Bethpage	Mon-Fri. 9am-4pm During school vacations breaks; Presidents Week, Spring Break, Winter Break, and 3 weeks during the Summer	Ages: 5-21 years Children with Autism and other Developmental Disabilities	Activity fee may apply	Nassau & Suffolk Counties Transportation included for all outings off site Must provide lunch Wheelchair accessible	Kelly Stumper Kstumper01@familyres.org Office: 631-273-4098 Cell: 516-492-6298
Eden II/Genesis	600 Newbridge Rd. East Meadow, NY 11554	During School Breaks (December, February, April) 9:00AM-3:00PM	Ages: 5 -21	\$40 per day	Nassau & Suffolk. community-based recreation/leisure activities Such as movies, bowling, arcade games, skating, shows, and outdoor recreation activities.	Jillian Panni 516-937-1397 x1311 jpanni@eden2.org



SCHOOL VACATION RESPITE

AGENCY	LOCATION	SERVICE HOURS	POPULATION SERVED	FEE	COMMENTS	CONTACT PERSON
--------	----------	---------------	-------------------	-----	----------	----------------

After School/Respite Program & School Vacation Respite: Provides services to developmentally disabled children or adults for several hours up to 5 days a week.

Horseability, Inc. PO Box 410-1 Old Westbury, NY	238 Round Swamp Road Melville (camp)	Summer Camp 9am – 3:30pm Mon.-Fri. 1 week in August	Ages: 3 years & up Developmentally Disabled	Camp Fee: \$875	Nassau & Suffolk Counties Wheelchair Accessible Scholarship Available (initial assessment for new families is a \$65 one-time fee)	Jamie Thomas Martin 516-333-6151 x111 jamie@horseability.org
Mid-Island Y Jewish Community Center	45 Manetto Hill Rd. Plainview	School Vacation Days 9am – 2:30pm	Children, Teens & Young Adults Autism Spectrum Disorder and developmental delays	\$25 fee	Nassau & Suffolk Counties Program includes arts & crafts, swimming, music, sports, & inclusion opportunities	Sharon Hanover 516-822-3535 x332 shanover@miyjcc.org Stephanie Ozner 516-822-3535 x 356 sozner@miyjcc.org *Self-Direction accepted when included in budget.
Nassau/Suffolk Services for the Autistic (NSSA)	80 Hauppauge Road Commack	1 week to be determined prior to session Mon.-Fri. 9:30 – 3:30 pm	Ages: 5-21 years Individuals with Autism	\$125 + sliding scale	Nassau & Suffolk Counties Summer Camp Program No transportation Does not accept individuals enrolled in self direction Does not accept individuals enrolled in self direction	Stacey O'Brien sobrien@nssa.net 631-462-0386 Randy Horowitz rhowitz@nssa.net 631-462-0386



SCHOOL VACATION RESPITE

AGENCY	LOCATION	SERVICE HOURS	POPULATION SERVED	FEE	COMMENTS	CONTACT PERSON
--------	----------	---------------	-------------------	-----	----------	----------------

After School/Respite Program & School Vacation Respite: Provides services to developmentally disabled children or adults for several hours up to 5 days a week.

Ohel/Bais Ezra	1268 E 14th St. Brooklyn NY	Mon.-Thurs. 10am -3:30pm Friday – 10-1:30am	Ages: 5-21 years Developmentally Disabled & Autistic	No Fee	Nassau County Includes transportation Programs runs for 7 nights at the end of summer in Catskills.	Hillary Zimmern Hillary_zimmern@ohelamily.org (718) 686-3486
Sid Jacobson Jewish Community Center	300 Forrest Drive East Hills	3 rd week of August 9am – 3:30pm	Ages:5-22 years Developmentally Disabled	No Fee	Post Summer Camp Program Accepts individuals enrolled in self direction	Amanda Burns 516-484-1545 x175 aburns@sjcc.org
Variety Child Learning Center	72 Farmedge Road, Levittown, N.Y. 11756	10am – 2pm School Vacations	Ages: 3 – 10 years Developmentally Disabled Children with Behavioral Challenges	No Fee	No transportation or Lunch Provided Does not accept individuals enrolled in self direction	Rebecca Esquilin 516-921-7171 x2104 resquilin@vclc.org



CRISIS INTERVENTION

AGENCY	LOCATION	SERVICE HOURS	POPULATION SERVED	FEE	COMMENTS	CONTACT PERSON
--------	----------	---------------	-------------------	-----	----------	----------------

Crisis Intervention: Services include behavioral assessment and intervention; training of families; linkage and referral; emergency in-home and out-of-home respite.

Angela's House Medically Frail Children NMSC Crisis	P.O. Box 5052 Hauppauge	Monday – Friday 9am – 5pm	Medically Frail, Technology Dependent, Chronically Ill and Developmentally Disabled 18 years or younger	No Fee	Intensive Crisis Non-Medicaid Service Coordination for children that are medically fragile, chronically ill and/or technology dependent.	Barbara Squillacioti 631-979-2620 Ext. 1 BSquillacioti@angelashouse.org
Angela's House Medically Frail Children Emergency Respite Voucher Reimbursement	P.O. Box 5052 Hauppauge	Individually scheduled Within the child's home	Medically Frail, Technology Dependent, Chronically Ill and Developmentally Disabled 18 years or younger	No Fee	Medically frail/technology dependent/chronically ill children, too compromised to attend typical respite options. Each child is eligible for a min. of 24 hours of emergency respite. Angela's House will synchronize all services necessary to provide Emergency Respite opportunities in the child's own home or in another environment.	Nicole Johnson 631-979-2620 Ext. 5 NJohnson@angelashouse.org



CRISIS INTERVENTION

AGENCY	LOCATION	SERVICE HOURS	POPULATION SERVED	FEE	COMMENTS	CONTACT PERSON
--------	----------	---------------	-------------------	-----	----------	----------------

Crisis Intervention: Services include behavioral assessment and intervention; training of families; linkage and referral; emergency in-home and out-of-home respite.

East End Disability Associates (EEDA)	729A Route 25A Rocky Point NY	24 hours a day 7 days a week	Ages: 7 and up Developmentally Disabled	No Fee	Suffolk County. Reduce intensity of crisis whether physical, emotional, or mental so they can return to previous level of care.	Mobile Crisis: Robert Dumas 631-369-7345 x151 RobertD@eed-a.org Luis Cruz 631-369-7345 x 123 LuisC@eed-a.org
Family Residences & Essential Enterprises, Inc. (FREE)	7 Dogwood Lane Westbury, NY 11590 Crisis House	24 hours a day 7 days a week	Ages: 16 years & up Developmentally Disabled	No Fee	Nassau & Suffolk Counties. The Assessment and Crisis Residences were developed to provide support and structure for individuals experiencing behavioral and emotional challenges.	Dana McCartan 516-368-2164 Dmccartan01@familyres.org Irene Williams 516-870-1600 x1683 IPW@familyres.org
Family Residences & Essential Enterprises, Inc. (FREE)	25 Wood Road Centereach Crisis House	24 hours a day 7 days a week	Ages: 16 years & up Developmentally Disabled	No Fee	Nassau and Suffolk County. Assessment and Crisis Residences developed to provide support & structure for individuals experiencing behavioral/emotional challenges.	Dana McCartan 516-368-2164 Dmccartan01@familyres.org Irene Williams 516-870-1600 ext 1683 IPW@familyres.org



CRISIS INTERVENTION

AGENCY	LOCATION	SERVICE HOURS	POPULATION SERVED	FEE	COMMENTS	CONTACT PERSON
--------	----------	---------------	-------------------	-----	----------	----------------

Crisis Intervention: Services include behavioral assessment and intervention; training of families; linkage and referral; emergency in-home and out-of-home respite.

Family Residences & Essential Enterprises, Inc. (FREE)	1363 North Jerusalem Road East Meadow	24 hours a day 7 days a week	Ages: 5 years & up Developmentally Disabled and their families	No Fee	Nassau and Suffolk County. Mobile Crisis Intervention aims to reduce the intensity of an individual's emotional, mental, physical and behavioral reactions to a crisis; to help individuals return to their level of functioning before the crisis and to assist the family unit to maintain a stable environment within the home.	Dana McCartan 516-368-2164 Dmccartan01@familyres.org Irene Williams 516-870-1600 x1683 IPW@familyres.org
Family Residences & Essential Enterprises, Inc. (FREE)	12 Old East Neck Rd. Melville (Crisis House)	24 hours a day 7 days a week	Ages: 16 years & up Developmentally Disabled	No Fee	Nassau & Suffolk County. Ambulatory. The Assessment and Crisis Residences were developed to provide support and structure for individuals experiencing behavioral & emotional challenges.	Dana McCartan 516-368-2164 Dmccartan01@familyres.org Irene Williams 516-870-1600 x1683 IPW@familyres.org



CRISIS INTERVENTION

AGENCY	LOCATION	SERVICE HOURS	POPULATION SERVED	FEE	COMMENTS	CONTACT PERSON
Crisis Intervention: Services include behavioral assessment and intervention; training of families; linkage and referral; emergency in-home and out-of-home respite.						
Family Residences & Essential Enterprises, Inc. (FREE)	120 Plant Avenue Hauppauge	24 hours a day 7 days a week	Ages: 5 years and up Developmentally Disabled and their families	No Fee	Nassau & Suffolk Counties Crisis intervention aims to reduce the intensity of an individual's emotional, mental, physical and behavioral reactions to a crisis; to help individuals return to their level of functioning before the crisis, and assist the family unit to maintain a stable environment within the home	Dana McCartan 516-368-2164 Dmccartan01@familyres.org Irene Williams 516-870-1600 x1683 IPW@familyres.org
Eden II/Genesis	600 Newbridge Rd East Meadow, NY 11554	As Needed	Ages: 5-21 years	No Fee	Nassau & Suffolk Counties. Crisis respite. Temporary break from care-giving to families during emergency situations.	Jillian Panni 516-937-1397 x1311 jpanni@eden2.org
Independent Group Home Living, Inc. (IGHL) Kara's House	356 South Sunrise Service Road Center Moriches	Services hours during the week vary Available weekends and holidays	Ages: 3 years and up Developmentally Disabled	No Fee	Nassau & Suffolk Counties. Provides short/long term crisis respite which provides consistent, nurturing and assuring environment to live	Lisa Lombardi 631-878-0636 LLombardi@ighl.org Bonnie Kessinger BKessinger@ighl.org



CRISIS INTERVENTION

AGENCY	LOCATION	SERVICE HOURS	POPULATION SERVED	FEE	COMMENTS	CONTACT PERSON
--------	----------	---------------	-------------------	-----	----------	----------------

Crisis Intervention: Services include behavioral assessment and intervention; training of families; linkage and referral; emergency in-home and out-of-home respite.

					in until a placement housing is secured.	
Innovative Resources for Independence (IRI)	112-40 Francis Lewis Blvd, Queens Village, NY, 11429	24 hours a day 7 days a week	Ages: 15 years & up Developmentally Disabled, Autistic and those with challenging behaviors	No Fee	Nassau County Only Will provide emergency respite services	Claudius Campos 646-372-5487 Claudius.campos@iriny.org Al Gibson Al.gibson@iriny.org Hotline# 646-542-4643



FAMILY COUNSELING, TRAINING & ADVOCACY

AGENCY	LOCATION	SERVICE HOURS	POPULATION SERVED	FEE	COMMENTS	CONTACT PERSON
Family Counseling, Training & Advocacy: Provides counseling, training, behavior management and advocacy services for the family and the developmentally disabled person, at the agency site or in the home.						
Angela's House (Medically Frail Children)	P.O. Box 5052 Hauppauge	Day & Evening	Medically frail, chronically ill, technology dependent and developmentally disabled	No Fee	Nassau & Suffolk Counties. Counsel about concerns and fears of Residential placement, training about OPWDD and other services, and advocacy about school issues and child's placement.	Barbara Squillacioti 631-979-2620 Ext. 1 BSquillacioti@angelashouse.org
Center for Rapid Recovery (CRR)	312 Greenwich St. Hempstead	Mon.-Fri. 9am-5pm	Families with Developmentally Disabled children and adults. Multicultural families	No Fee	Nassau & Suffolk Counties Bilingual public awareness information, advocacy, and referral	Cassandra Woods 516-292-6449 x113 cwoods@rapidrecovery.org Andrea Newalis 516-292-6449 x110 anewalis@rapidrecovery.org
Developmental Disabilities Institute (DDI)	Various Locations	Individually scheduled (within the home)	Adults & children with developmental disabilities and their families	No Fee	Nassau & Suffolk Counties Program provides short-term behavioral consultation and parent training to families who have children diagnosed with developmental disability	Marina Melillo 631-360-4600 x4656 Marina.Melillo@ddiny.org
Down Syndrome Advocacy Foundation	P.O. Box 12173 Hauppauge	As needed (Yearly conference on Best Practices in the education of children with Down Syndrome)	Family members of individuals with Down Syndrome and other	No Fee	Nassau & Suffolk Counties Parent training and workshop	Jenny Andersson 516-983-7008 dsaf03@gmail.com



FAMILY COUNSELING, TRAINING & ADVOCACY

AGENCY	LOCATION	SERVICE HOURS	POPULATION SERVED	FEE	COMMENTS	CONTACT PERSON
--------	----------	---------------	-------------------	-----	----------	----------------

Family Counseling, Training & Advocacy: Provides counseling, training, behavior management and advocacy services for the family and the developmentally disabled person, at the agency site or in the home.

			Developmental Disabilities		Limited Scholarships available to parents of children with Down Syndrome	
East End Disability Associates (EEDA)	Location varies by service	As scheduled	Intellectually disabled adults and family	No Fee	East Suffolk Long Island East of William Floyd Parkway Series of events that educate families in either Education, Social, or Advocacy topics.	Joy O'Shaughnessy 631-369-7345 x208 JoyO@eed-a.org
Family Residences & Essential Enterprises, Inc. (FREE)	191 Sweet Hollow Rd. Old Bethpage	Day & Evening	All Ages Prader-Willi Syndrome	No Fee	Nassau & Suffolk Counties In home intervention, parent & family counseling and training	Rob Melnick 631-273-1329 x3529 RMelnick@familyres.org
Family Counseling Services- a division of Family Services League	William Floyd Family Center 338 Blanco Drive Mastic Beach, NY 11951	Parent Support group runs 8 sessions at a time, 3 times per year. Mondays 6p-7pm	Ages: 5-18 Developmental Disabilities	Included in fee for social skills program	Parent support group offered in conjunction with social skills group Does not accept individuals enrolled in self direction	Brianna Palisi 631-998-0016 Brianna.Palisi@fsl-li.org
Head Injury Association, Inc. (HIA)	300 Kennedy Drive Hauppauge	Mon.-Fri. 9am-5pm	Families & survivors w/ head injuries	No Fee	Nassau and Suffolk Counties "FACTS Program" Info. & referral regarding all aspects of	Laura Conrad 631-543-2245 x8762 LConrad@HeadInjuryAsoc.org



FAMILY COUNSELING, TRAINING & ADVOCACY

AGENCY	LOCATION	SERVICE HOURS	POPULATION SERVED	FEE	COMMENTS	CONTACT PERSON
Family Counseling, Training & Advocacy: Provides counseling, training, behavior management and advocacy services for the family and the developmentally disabled person, at the agency site or in the home.						
					traumatic brain injury and services offered through OPWDD. Periodic group training/informal sessions offered.	
Long Island Advocacy Center	490 Wheeler Rd., Hauppauge	Monday – Friday 9am – 5pm	15 years & up Developmentally Disabled and their families	No Fee	Nassau & Suffolk Counties Benefits advisement & supports for OPWDD eligibility. Does not accept individuals enrolled in self direction.	Ann Marie Fitzpatrick (516) 248-2222 x12 afitzpatrick@theliac.org
Parent to Parent of NYS, Inc	415A Oser Avenue Hauppauge	Mon.-Fri. 9am- 5pm	All ages All disabilities	No Fee	We provide resources, guidance, and support to parents of children with special needs through workshops and trainings, support groups, parent matching, and an informational email group.	Valerie Colavecchio vcolavecchio@ptopnys.org Dodie Daniels ddaniels@ptopnys.org Main# 1-800-559-1729
New Horizons Counseling Center	50 West Hawthorne Valley Stream	Mon.-Thurs. 9am-9pm Fri.-Sat. 9am-5pm	Developmentally Disabled individuals and their families Parent & sibling support groups	Sliding Scale for Individual Counseling	Nassau & Suffolk County. Individual & family counseling & family support. Sibling support groups, linkage & referral.	Alysia Clarke 718-327-7202 alysia@nhcc.us Quianna West qwest@nhcc.us 516-569-6600



FAMILY COUNSELING, TRAINING & ADVOCACY

AGENCY	LOCATION	SERVICE HOURS	POPULATION SERVED	FEE	COMMENTS	CONTACT PERSON
--------	----------	---------------	-------------------	-----	----------	----------------

Family Counseling, Training & Advocacy: Provides counseling, training, behavior management and advocacy services for the family and the developmentally disabled person, at the agency site or in the home.

				No fee for groups	Accepts individuals enrolled in self direction	
--	--	--	--	-------------------	--	--



PARENT TRAINING FOR PARENTS WITH DEVELOPMENTAL DISABILITIES

AGENCY	LOCATION	AGENCY	LOCATION	AGENCY	LOCATION	AGENCY
--------	----------	--------	----------	--------	----------	--------

Parent Training for DD Parents: Provides parent skills and training for parents with developmental disabilities.

Long Island Advocacy Center	999 Herricks Rd., New Hyde Park	Mon.-Fri. 9am-5pm	Parents with developmental disabilities and their children	No Fee	Empowering parents with developmental disabilities to advocate for their children within the educational system Does not accept individuals enrolled in self direction	Pam Zimmer 631-234-0467 x12 pzimmer@theliac.org
-----------------------------	------------------------------------	----------------------	--	--------	---	--



IN-HOME RESPITE

AGENCY	LOCATION	AGENCY	LOCATION	AGENCY	LOCATION	AGENCY
--------	----------	--------	----------	--------	----------	--------

In-Home Respite: Matches trained respite workers with families to provide scheduled care for individuals with developmental disabilities in their homes.

A-1 Universal Care	255 Executive Drive, Suite 309, Plainview	Days & Evening – as needed	Ages: 6-60 years Developmentally Disabled	No Fee	Nassau County Only Can serve people with 1:1 supports	Nancy Parada 516-338-8777 x14 nparada@a1universalcare.org
Adults and Children with Learning & Developmental Disabilities (ACLD)	807 S. Oyster Bay Rd Bethpage	Day & Evening	All Ages Developmentally Disabled	No Fee	Nassau & Suffolk Counties. Voucher program.	Rodlane Bien-Aise 516-336-5909 ext.209 bienaiser@aclid.org
Bais Ezra	3611 14 th Ave Suite 550 Brooklyn	Day & Evening	All Ages Developmentally Disabled	No Fee	Nassau County Only Accepts individuals enrolled in self direction	Hillary Zimmern 718-686-3486 Hillary_zimmern@ohelfamily.org
Developmental Disabilities Institute (DDI)	90 Air Park Drive Ronkonkoma	Monday through Friday 8am-12pm	Ages 3 - 7	No fee	Nassau & Suffolk Counties Project "SOAR"	Christine Racca 631-580-4004 christine.racca@ddiny.org
Economic Opportunity Council (EOC)	320 Carlton Avenue Suite 7800 Central Islip	Days & Evenings- As needed	All individuals approved/eligible for OPWDD services	No fee	Nassau and Suffolk Counties. In-home respite services for individuals with maladaptive behaviors and/or in crisis	Simone Holder 631-666-6471 x602 sholder@eoc-suffolk.com Cicely Hobbs 631-666-6471 x602 chobbs@eocsuffolk.com



IN-HOME RESPITE

AGENCY	LOCATION	AGENCY	LOCATION	AGENCY	LOCATION	AGENCY
--------	----------	--------	----------	--------	----------	--------

In-Home Respite: Matches trained respite workers with families to provide scheduled care for individuals with developmental disabilities in their homes.

Haitian Americans United for Progress, Inc. (HAUP)	221-05 Linden Blvd. Cambria Heights	9am – 9pm	Ages: 3 years & up Developmentally Disabled	No Fee	Nassau & Suffolk Counties	John Fontus 718-527-3272 X2 jfontus@haupinc.org
Helen Keller Services for the Blind	One Helen Keller Way Hempstead NY 11550	24 hours a day 7 days a week	Ages: 16 and over Developmentally Disabled	No Fee	Nassau & Suffolk Counties Trained staff provide respite services in home.	Jenna Bassolino 516-485-1234 x6629 jbassolino@helenkeller.org
Independent Group Home Living (IGHL)	221 North Sunrise Service Road Manorville	Day & Evening	All Ages Developmentally Disabled	\$1 per hour per child	Eastern Suffolk County	Frank Lombardi Flombardi@ighl.org
Innovative Resources for Independence (IRI)	112-40 Francis Lewis Blvd, Queens Village, NY, 11429	As needed – 10 hours per week	9 years and up Autistic	No Fee	Nassau County Only	Claudius Campos 646-372-5487 claudius.campos@in-res.org
Nassau/Suffolk Services for the Autistic (NSSA)	The Martin C. Barell School 80 Hauppauge Road Commack	Day & Evening	Ages: 4 years & up Autistic/ Autistic Spectrum	No Fee	Nassau & Suffolk Counties Does not accept individuals enrolled in self direction	Christine Rodriguez 631-462-0386 crodriguez@nssa.org



IN-HOME RESPITE

AGENCY	LOCATION	AGENCY	LOCATION	AGENCY	LOCATION	AGENCY
--------	----------	--------	----------	--------	----------	--------

In-Home Respite: Matches trained respite workers with families to provide scheduled care for individuals with developmental disabilities in their homes.

Quality Services for the Autism Community (QSAC)	253 West 35 th Street 16 th floor New York, NY 10001	Day & Evening Weekdays Weekend	Ages: 3 years & up Autistic/PDD	No Fee	Nassau County Only Ongoing & crisis, in home respite Accepts individuals enrolled in self direction	Vicky Ramsay 718-728-8476 x2659 vramsay@qsac.com
United Cerebral Palsy Association of Greater Suffolk County, Inc. (UCP of Suffolk)	250 Marcus Blvd. Hauppauge	Tuesday, Wednesday, and Thursday 8:30-4:30pm	Ages: infancy to 21 years. Developmentally Disabled	Voucher Reimbursement	Suffolk County Only.	Karen Logue 631-232-0011 x415 klogue@ucp-suffolk.org



OVERNIGHT FREESTANDING RESPITE

AGENCY	LOCATION	SERVICE HOURS	POPULATION SERVED	FEE	COMMENTS	CONTACT PERSON
--------	----------	---------------	-------------------	-----	----------	----------------

Overnight Freestanding Respite: Scheduled respite in certified agency operated respite homes, weekends or weekdays.

Association for the Help of Retarded Children of Nassau County (AHRC Nassau) (Citizen's Inc.)	7 Fisher Lane Levittown	Scheduled as needed, overnight or weekly	Ages: 21 years & up no medical or behavioral problems requiring special supervision	No Fee	Nassau County Only Day respite is also available on weekends	Justin Moskowitz 516-653-0141 ahrc4420r@ahrc.org
Association for the Help of Retarded Children of Suffolk County (AHRC Suffolk)	1210 Portion Rd. Holtsville	7 days a week – except major holidays	Ages: 21 years & up	No Fee	Suffolk County Only. No awake overnight supervision. Must be ambulatory, able to complete ADLs. No medical or behavioral problems requiring special supervision. Transportation only available from AHRC Suffolk Day Programs.	Mary Gallicchio 631-585-0100 x557 mgallicchio@suffahrc.org
East End Disability Associates, Inc. (EEDA)	2 Harding Rd. Rocky Point	Fri – Mon. 3 pm – 9am	Children and adults 7 and up. Developmentally disabled	No Fee	Nassau & Suffolk Counties	Luis Cruz 631-369-7345 x123 LuisC@eed-a.org
Family Residences & Essential Enterprises, Inc (FREE)	1363 North Jerusalem Road E. Meadow	Scheduled as needed overnight or weekly 24/7	Ages: 8 years & up Developmentally Disabled No medical or behavioral problems requiring special supervision	No Fee	Nassau & Suffolk Counties Ambulatory	Dana McCartan 516-870-1600 x1880 Dmccartan01@familyres.org



OVERNIGHT FREESTANDING RESPITE

AGENCY	LOCATION	SERVICE HOURS	POPULATION SERVED	FEE	COMMENTS	CONTACT PERSON
--------	----------	---------------	-------------------	-----	----------	----------------

Overnight Freestanding Respite: Scheduled respite in certified agency operated respite homes, weekends or weekdays.

Independent Group Home Living, Inc. (IGHL)	1350 Wm. Floyd Pkwy. Shirley	Scheduled as needed hourly (Minimum 8 hrs.) Overnight or weekly	Ages: 3 years & up Developmentally Disabled	No Fee	Nassau & Suffolk Counties Ambulatory	Frank Lombardi Flombardi@ighl.org House # 631-878-8886
Independent Group Home Living, Inc.	138 Holbrook Rd. Holbrook, NY (631) 467-1205	Scheduled as needed hourly (Minimum 8 hrs.) overnight or weekly	Ages: 3 years & up Developmentally Disabled	No Fee	Nassau & Suffolk Counties Non-Ambulatory	Frank Lombardi Flombardi@ighl.org
Long Island Developmental Disabilities Services Office (LIDDSO)	Melville and Center Moriches	Open weekends Friday 4pm to Sunday 4pm	All Ages Developmentally Disabled	No Fee	Nassau & Suffolk Counties Ambulatory	Jaime Sessa 631-385-3125 jaime.d.corette@opwdd.ny.gov
United Cerebral Palsy Association of Greater Suffolk (UCP of Suffolk)	159 Indian Head Road Commack	Open 24 hours a day 7 days a week	Ages: 10 years & up Developmentally Disabled	No Fee	Nassau & Suffolk Counties Non-ambulatory Medically involved	Kadine Goulbourne 631-543-4500 x286 kgoulbourne@ucp-suffolk.org
YAI -National Institute for People w/Disabilities (YAI/NIPD)	211 Old South Path Melville	Open Thursday - Tuesday 3pm - 10am Open 7 days through the summer	Ages: Pre-School to Adults All Developmental Disabilities	No Fee	Nassau & Suffolk Counties One emergency bed per week	Stephen Higgins 631-423-0460 stephen.higgins@yai.org



OVERNIGHT FREESTANDING RESPITE

AGENCY	LOCATION	SERVICE HOURS	POPULATION SERVED	FEE	COMMENTS	CONTACT PERSON
--------	----------	---------------	-------------------	-----	----------	----------------

Overnight Freestanding Respite: Scheduled respite in certified agency operated respite homes, weekends or weekdays.

YAI -National Institute for People w/Disabilities (YAI/NIPD)	2040 Edith Place Merrick	Friday 3pm through Monday 10am	All Ages All Developmental Disabilities	No Fee	Nassau County Only 5:2 staffing Wheelchair accessible	Stephen Higgins 631-423-0460 stephen.higgins@yai.org
--	--------------------------	--------------------------------	--	--------	---	---



WEEKEND & RECREATION RESPITE PROGRAMS

AGENCY	LOCATION	SERVICE HOURS	POPULATION SERVED	FEE	COMMENTS	CONTACT PERSON
--------	----------	---------------	-------------------	-----	----------	----------------

Respite Recreation: Provides care through recreation and social activities at various agencies in Nassau and Suffolk Counties.

A-1 Universal Care, Inc.	Yes We Can Community Center, 141 Garden Street, Westbury, NY 11590	Saturdays Only 10am – 3pm	Ages: 14 & up Developmentally Disabled	No Fee	Nassau County Only	Nancy Parada 516-338-8777 x14 nparada@a1universalcare.org
Association for Children with Down Syndrome (ACDS)	Various community locations	Meets 2x a month on Sundays	Ages: 15+ years Developmentally Disabled	Varies accord to activity	Nassau & Suffolk Counties ICE Program (Integrated Community Experience)	Brian Laubis 516-605-2391 blaubis@acds.org
Association for Children with Down Syndrome (ACDS)	270 Washington Ave., Plainview	Saturdays 10am- 2pm	Ages: 5 years and older	No Fee	Nassau and Suffolk Counties Arts & Crafts, music, computers, cooking	Brian Laubis 516-605-2391 blaubis@acds.org
Association for Children with Down Syndrome (ACDS)	270 Washington Avenue Plainview	Friday 6:30pm – 9pm Jan – April	Teenage and Adults Down Syndrome & Developmentally Disabled	Fee	Nassau & Suffolk Counties Drop-in-lounge Karaoke – socialization	Brian Laubis 516-605-2391 blaubis@acds.org



WEEKEND & RECREATION RESPITE PROGRAMS

AGENCY	LOCATION	SERVICE HOURS	POPULATION SERVED	FEE	COMMENTS	CONTACT PERSON
--------	----------	---------------	-------------------	-----	----------	----------------

Respite Recreation: Provides care through recreation and social activities at various agencies in Nassau and Suffolk Counties.

Brookville Center for Children's Services	189 Wheatley Rd Brookville, NY 11545	Saturdays 10am-3pm	Ages: 5 – 21 years Developmentally Disabled Autism spectrum	No Fee	Nassau & Suffolk Counties Wheelchair Accessible Respite Recreation Program	Ed Hackimer 516-626-1075 x3353 ehackimer@brookvillecenter.org Marianne R. Klotz 516-626-1075 x3350 mklotz@brookvillecenter.org
Brookville Center for Children Services	189 Wheatley Rd Brookville Cissy Birnbaum Building	Alternate Saturdays 9am – 1pm 2 eight session programs Sept to Dec & Feb to May	Ages: 5-18 years Autism Spectrum Disorder	No Fee	Recreation/Social Skills Program Peer mentors assist the children in social settings Activities include: playground, arts & crafts, cooking and games No transportations and must provide own lunch	Sherry Black 516-626-1075 x2410 sblack@brookvillecenter.org Jennifer Moore x3327 jmoore@brookvillecenter.org Marianne Klotz x3351 mklotz@brookvillecenter.org
Central Nassau Guidance & Counseling Services, Inc.	Starry Night Café 950 S. Oyster bay Rd Hicksville	Thur: 5-9pm Fri: 4 – 11pm Sat: 4-11pm	Ages: 18 years & up Developmentally Disabled	No fee for program	Nassau & Suffolk Counties Individual-operated coffee house, nightclub environment catering to the creative talents of persons with disabilities Food and beverages can be purchased by patron	Lina Vinas 516-822-6111 x1251 Lvinas@centralnassau.org



WEEKEND & RECREATION RESPITE PROGRAMS

AGENCY	LOCATION	SERVICE HOURS	POPULATION SERVED	FEE	COMMENTS	CONTACT PERSON
--------	----------	---------------	-------------------	-----	----------	----------------

Respite Recreation: Provides care through recreation and social activities at various agencies in Nassau and Suffolk Counties.

Developmental Disabilities Institute (DDI)	75 Landing Meadow Road Smithtown	Monday, Wednesday & Friday 4pm – 7pm	Ages: 18 years & up Developmentally Disabled	No Fee	Athletics academy focusing on health & fitness. Rotating bimonthly sports schedule.	Jim Woolsey 631-870-6026 James.Woolsey@ddiny.org Steve Gagas 631-360-4641 Stamatios.Gagas@ddiny.org
Developmental Disabilities Institute (DDI)	90 Air Park Drive Ronkonkoma	Saturday's 9am-12pm	Ages: 3 to 7 years	No fee	Nassau & Suffolk Counties Project "SOAR"- Saturday recreation program	Christine Racca 631-580-4004 Christine.racca@ddiny.org
East End Special Players	Southampton Senior Citizen's Center Bridgehampton/Sag Harbor Turnpike Southampton	Saturdays 11am – 3pm	Adults Developmentally Disabled	No Fee	Other locations for theatrical program Writing collaboratively and produce original plays Accepts individuals enrolled in self direction	Matthew Kuriloff 631-320-6099 mkuriloff@icloud.com Paul Rogers 631-726-4609 paul@chaleffandrogers.com
Economic Opportunity Council (EOC)	320 Carlton Avenue Suite 7800 Central Islip, NY 11722	Saturdays 10am – 5pm	Ages: 15 years & up Developmentally Disabled	No Fee	Nassau & Suffolk Counties Transportation & Lunch provided	Simone Holder sholder@eoc-suffolk.com Cicely Hobbs 631-666-6471 x602 chobbs@eoc-suffolk.com



WEEKEND & RECREATION RESPITE PROGRAMS

AGENCY	LOCATION	SERVICE HOURS	POPULATION SERVED	FEE	COMMENTS	CONTACT PERSON
--------	----------	---------------	-------------------	-----	----------	----------------

Respite Recreation: Provides care through recreation and social activities at various agencies in Nassau and Suffolk Counties.

					Participants can schedule program times as needed	
EPIC LI	1500 Hempstead Turnpike, East Meadow NY 11554	Alternate Saturdays 10 am-3pm	Ages: 18 years & up Developmentally Disabled	No fee	Nassau & Suffolk Counties No transportation Lunch provided	Allen Siegel Asiegel@epicli.org 516-739-7733 ext. 310
Family Residences & Essential Enterprises, Inc. (FREE)	1404 Stony Brook Road, Stony Brook NY 11790 & 120 Plant Ave Hauppauge, NY 11788	Saturdays 10:30am - 1:30pm	Ages: 5 years & up Developmentally Disabled	No Fee	Suffolk County Only	Kelly Stumper Kstumper01@familyres.org Office: 631-273-4098 Cell: 516-492-6298
Family Residences & Essential Enterprises, Inc. (FREE)	Saddle Rock Ranch 41 Coram Swezeytown Road Coram	Mon - Fri 9am – 5pm Saturday 10am – 2:30pm	Ages: 5 years and up Developmentally Disabled	\$40 per session /no fee	Nassau & Suffolk Counties – Therapeutic Riding Program/Pet Therapy	Daniel Twitchell 631-345-0318 Dtwitchell01@familyres.org
Family Residences & Essential Enterprises, Inc. (FREE)	191 Sweet Hollow Rd. Old Bethpage	Java Jam Monday Evenings 6pm-9pm	14 years & up Autism spectrum disorders and other mild Developmental Disabilities	No fee	Nassau & Suffolk Counties Fully accessible Includes open-microphone, karaoke, musical & dance performances, poetry readings, etc	Sue Binder 516-870-1667 sbinder01@familyres.org



WEEKEND & RECREATION RESPITE PROGRAMS

AGENCY	LOCATION	SERVICE HOURS	POPULATION SERVED	FEE	COMMENTS	CONTACT PERSON
--------	----------	---------------	-------------------	-----	----------	----------------

Respite Recreation: Provides care through recreation and social activities at various agencies in Nassau and Suffolk Counties.

					A selection of creative and healthy snacks and beverages provided	
Family Residences & Essential Enterprises, Inc. (FREE)	191 Sweet Hollow Rd. Old Bethpage	Sunday Funday Sundays Twice a month 11am-4pm	18 years & up Developmental Disabilities	No fee	Nassau & Suffolk Counties Program is fully accessible Includes sports, arts & crafts, musical & dance parties, photography, floral design, health & beauty classes, etc Also includes creative & healthy snacks and beverages	Sue Binder 516-870-1667 sbinder01@familyres.org
Family Counseling Services- a division of Family Services League	23 Frowein Rd. Suite 2, Center Moriches	2 Sundays per month from 10:30am-12pm (Off during July)	Ages: 5-18 Developmental Disabilities	No Fee	Respite program offered at Kidnastics Does not accept individuals enrolled in self direction	Brianna Palisi 631-998-0016 Brianna.Palisi@fsl-li.org
Friedberg Jewish Community Center	15 Neil Court Oceanside	After School Weekdays & Peer Program Sundays (twice/month) 12-2pm	Teens and young adults on the Autism Spectrum, or with other Developmental Disabilities	No Fee	After school enrichment clubs, Sunday social clubs, life-skills workshop	Marcy Hallerman 516-634-4173 mhallerman@friedbergjcc.org Main # 766-4341
Eden II/Genesis	600 Newbridge Rd East Meadow, NY 11554	1-2x per month 9am – 3pm	Ages: 5 and up	\$40 per trip	Nassau & Suffolk Counties. Community-based recreation and leisure program (eating out,	Jillian Panni 516-937-1397 x1311 jpanni@eden2.org



WEEKEND & RECREATION RESPITE PROGRAMS

AGENCY	LOCATION	SERVICE HOURS	POPULATION SERVED	FEE	COMMENTS	CONTACT PERSON
--------	----------	---------------	-------------------	-----	----------	----------------

Respite Recreation: Provides care through recreation and social activities at various agencies in Nassau and Suffolk Counties.

					movies, games, shows, outdoor recreation).	
Head Injury Association (HIA)	300 Kennedy Drive Hauppauge	Vary depending on activity	Ages: 18 years & up Individuals with head injuries and Developmental Disabilities	No fee	Nassau & Suffolk Counties	Dina Nickel 631-297-8744 dnickel@headinjuryassoc.org
Human First, Inc.	128 Atlantic Avenue Lynbrook	Saturdays 9am – 4pm	Adults & Children Developmentally Disabled	No Fee	Transportation & lunch provided from central pick-up	Lasana Rayside 718-345-1119 LRayside@humanfirst.org
Independent Group Home Living, Inc. (IGHL)	221 North Sunrise Service Road Manorville	Saturdays 9:30am-2:30pm Sept-May	Ages: 3 years & up Developmentally Disabled	No Fee	Suffolk County Only Transportation provided & snack	Frank Lombardi Flombardi@ighl.org
Independent Group Home Living, Inc. (IGHL)	221 North Sunrise Service Road Manorville	Vary depending on activity	Ages: 5 years & up Developmentally Disabled	None	Suffolk County Only Supported funding for community integrated activities No transportation	Jeanne Kielhurn 631-849-1761 kielhurn@angelashouse.org
Independent Group Home Living, Inc. (IGHL)	221 North Sunrise Service Road Manorville	Two Fridays a month 6pm – 10pm	Ages: 16 years & up Developmentally Disabled	Minimal fee at times	Suffolk County Only Community integrated activities Central pickup for transportation	Frank Lombardi Flombardi@ighl.org



WEEKEND & RECREATION RESPITE PROGRAMS

AGENCY	LOCATION	SERVICE HOURS	POPULATION SERVED	FEE	COMMENTS	CONTACT PERSON
--------	----------	---------------	-------------------	-----	----------	----------------

Respite Recreation: Provides care through recreation and social activities at various agencies in Nassau and Suffolk Counties.

Independent Group Home Living, Inc. (IGHL)	221 North Sunrise Service Road Manorville	2 trips per year	Ages: 16 years & up Developmentally Disabled	No Fee	Suffolk County Only Overnight travel programs	Frank Lombardi Flombardi@ighl.org
Independent Group Home Living, Inc. (IGHL)	221 North Sunrise Service Road Manorville	Varies depending on activity	Ages: 16 years & up Developmental Disabled	Cost varies on activity	Suffolk County Only Community integrated activities 1:1 Transportation	Frank Lombardi Flombardi@ighl.org
Independent Group Home Living, Inc. (IGHL)	221 North Sunrise Service Road Manorville	Four sessions per year (Summer/Fall/Winter/Spring) Lasts approx 3 weeks	Ages: 10 years & up Autism & Autism Spectrum Disorder	No Fee	Sports Activities & Fitness Program	Frank Lombardi Flombardi@ighl.org
IRIE	Sundance Stables 37 North St Manorville	Mon-Thurs, Sat *By appointment only*	Developmentally Disabled Children	Sliding Scale	Therapeutic Horseback Riding Equestrian Related Activities Accepts individuals enrolled in self direction	Joy Rootkowski 631-871-1916 iriehorses@aol.com
Kulanu	620 Central Avenue Cedarhurst	Sundays (during school year) 9am-12pm	Individuals with Intellectual & Developmental Disabilities, ages 4-21	\$25 per session	Wheelchair accessible. Program has full gym, sensory rooms, offsite activities with community volunteers and professionals Accepts individuals enrolled in self direction	Amanda Savage 516-569-3083 ext. 132 asavage@kulanukids.org



WEEKEND & RECREATION RESPITE PROGRAMS

AGENCY	LOCATION	SERVICE HOURS	POPULATION SERVED	FEE	COMMENTS	CONTACT PERSON
--------	----------	---------------	-------------------	-----	----------	----------------

Respite Recreation: Provides care through recreation and social activities at various agencies in Nassau and Suffolk Counties.

Life's WORC	1501 Franklin Ave. Garden City	Saturdays 11am-4 pm	Ages: 13+ Intellectual and Developmental Disabilities/Autism	No Fee	Nassau & Suffolk Counties (Garden City, East Rockaway, and Deer Park locations). Combination of site- based and community trips (staff transport into community, parents drop off & pick up). Must be independent with toileting; a 6:1 staff ratio within the community.	Askena Varner (516) 741-9000 ext. 8120 AVarner@lifesworc.org
Life's WORC (Creative Arts Program)	@ Family Center for Autism, 1517 Franklin Ave, Garden City	Saturdays – 11 am to 1pm	Ages 5-18 years Autism Only	No Fee	Nassau County. No transportation provided. Session broken into 3 parts: music, art, and snack. Best for children that do well with structured activities. Must be independent with toileting (including initiation) and can be safely supported within a 3:1 staff ratio.	Askena Varner (516) 741-9000 ext. 8120 AVarner@lifesworc.org
Life's WORC (Making Connections)	Nassau: @ Familiy Center for Autism, 1517 Franklin Ave, Garden City	Nassau: 9:30 am – 12:30 pm Suffolk: 11:00 am – 2:00 pm	Ages: 5-18 yrs with Autism. Must be independent with toileting and safely supported	No Fee	Nassau & Suffolk counties; no transportation provided. Rotate between rec activities (crafts, gym, games).	Askena Varner (516) 741-9000 ext. 8120 AVarner@lifesworc.org



WEEKEND & RECREATION RESPITE PROGRAMS

AGENCY	LOCATION	SERVICE HOURS	POPULATION SERVED	FEE	COMMENTS	CONTACT PERSON
--------	----------	---------------	-------------------	-----	----------	----------------

Respite Recreation: Provides care through recreation and social activities at various agencies in Nassau and Suffolk Counties.

	Suffolk: @ Great South Bay YMCA, 200 W. Main Street, Bay Shore, NY		within a 3:1 staff ratio.		Best for children that prefer less-structured activities/want freedom to choose level of participation Must be independent with toileting (including initiation). Supported within a 3:1 staff ratio.	
Long Island Toy Lending Center for Children with Disabilities	Farmingdale Library 116 Merritts Road Farmingdale & Town of Hempstead E.Marina, 1501 Lido Blvd.,Point Lookout	Mon.-Fri. 9am-6pm Respite one weeknight per month (Tuesday, (3-4 hours per night)	Ages: infants -15 yrs Developmentally Disabled	Sliding Scale	Nassau & Suffolk Counties Resource Center & Toy Lending Library. Accepts individuals enrolled in self direction	Colleen Moseman 516-889-8287 litoycenr@gmail.com
Maryhaven Center of Hope	455 County Road/ 101 Sills Rd. Yaphank	Saturdays 10am – 2pm	Ages: 15-60 Developmentally Disabled	No Fee	Suffolk County Only. Recreational Activities, Arts and Crafts, Games and Group Activities, Dancing, Local Community Outings. Accepts individuals enrolled in self direction	Phil Orofino 631-924-5900 x195 phillip.orofino@chsli.org
Mill Neck Services	501 So. Broadway Hicksville	Wednesday evenings 6pm-9pm Saturdays 10am-2pm 2x a month	Deaf & Developmentally Disabled	No Fee	Nassau & Suffolk Counties Recreation Café Accepts individuals enrolled in self direction	Loretta Murray 516-922-3818 deafesq@millneck.org John Saal 516-322-4003 jsaal@millneck.org



WEEKEND & RECREATION RESPITE PROGRAMS

AGENCY	LOCATION	SERVICE HOURS	POPULATION SERVED	FEE	COMMENTS	CONTACT PERSON
--------	----------	---------------	-------------------	-----	----------	----------------

Respite Recreation: Provides care through recreation and social activities at various agencies in Nassau and Suffolk Counties.

Nassau/Suffolk Services for the Autistic, Inc. (NSSA)	80 Hauppauge Road Commack	Jan.-June, Sept. – Dec. & July & Aug 2 sessions 2 Saturdays a month 10am – 3pm Alternating Saturday sessions as per program calendar.	Ages: 4-21 years Autistic/ Autistic Spectrum	No fee	Nassau & Suffolk Counties Does not accept individuals enrolled in self direction	Christine Rodriguez crodriguez@nssa.net 631-462-0386 ext 202 Alissa Cohen acohen@nssa.net
Tiegerman Community Services (Formally SLCD)	100 Glen Cove Ave. Glen Cove	Saturdays 10am – 3pm	Ages: 3 to 15 years Children with Autism & Developmental Disabilities	No Fee	Nassau & Suffolk Counties Recreation based and includes music, dance, gym and art	Christine Austin 516-609-2000 x803 caustin@slcd.org
Sid Jacobson Jewish Community Center	300 Forest Drive East Hills	Saturdays 6pm – 9pm	Ages: 9-21 years Developmentally Disabled & Autistic	No Fee	Nassau & Suffolk Counties Open for 18 Saturday nights during the year	Amanda Burns 516- 484-1545 x175 aburns@sjcc.org
Special Olympics – Long Island	Different Location Every Year.	One day event 10:30am-2:30pm Practice sessions Jan-June Starts again in September	Developmentally Disabled Children & Adults	No Fee	Young Athlete Skills Tournament	Alexis Dawson 631-386-8038 adawson@nyso.org Tim Flynn 212-661-4327 tflynn@nyso.org



WEEKEND & RECREATION RESPITE PROGRAMS

AGENCY	LOCATION	SERVICE HOURS	POPULATION SERVED	FEE	COMMENTS	CONTACT PERSON
--------	----------	---------------	-------------------	-----	----------	----------------

Respite Recreation: Provides care through recreation and social activities at various agencies in Nassau and Suffolk Counties.

Special Olympics – Long Island	Lawrence Primary School 1 Donahue Road, Inwood NY	10am – 12pm	Developmentally Disabled Children & Adults	No Fee	Transportation Program (buses) expenses to State Competitions 2x/year.	Alexis Dawson 631-386-8038 adawson@nyso.org Tim Flynn 212-661-4327 tflynn@nyso.org
United Cerebral Palsy of Suffolk County (UCP of Suffolk)	250 Marcus Blvd. Hauppauge	One per month, 2 nd Thursday “Thursday Club” 3:30pm – 6:30pm	Adults Developmentally Disabled	No Fee	No Transportation	Joan Sarrica 631-232-0011 x638 jsarrica@ucp-suffolk.org
United Cerebral Palsy of Suffolk County (UCP of Suffolk)	250 Marcus Blvd. Hauppauge	10am – 2pm 48 Saturdays a year	Developmentally Disabled	No Fee	Suffolk County Limited transportation Bring own lunch	Keith Jones 631-232-0011 x607 kjones@ucp-suffolk.org
United Cerebral Palsy of Suffolk County (UCP of Suffolk)	250 Marcus Blvd. Hauppauge	Saturdays 10:30am – 1:30pm 46 Saturdays Annually	Adults who are medically frail, multi- handicapped who need medical monitoring, physical care and assistance	No Fee	Limited transportation provided within 10 mile radius or families can transport. Max of 12 individuals per Saturday Families to provide lunch, diapers, medications, etc	Keith Jones 631-232-0011 x607 kjones@ucp-suffolk.org

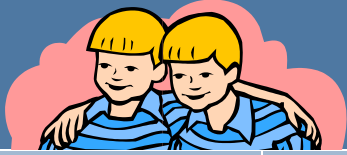


WEEKEND & RECREATION RESPITE PROGRAMS

AGENCY	LOCATION	SERVICE HOURS	POPULATION SERVED	FEE	COMMENTS	CONTACT PERSON
--------	----------	---------------	-------------------	-----	----------	----------------

Respite Recreation: Provides care through recreation and social activities at various agencies in Nassau and Suffolk Counties.

Variety Child Learning Center	47 Humphrey Dr. Syosset	18 Sundays September to June 9:30am – 3:30pm	Ages: 3-10 years Developmentally Disabled Autism Spectrum Also can have non-disabled siblings	Please call or email for sibling program fee	Children bring lunch, snack is provided Peanut free building Some staff bilingual Does not accept individuals enrolled in self direction	Rebecca Esquilin 516-921-7171 x2104 resquilin@vclc.org



SIBLING SUPPORT

AGENCY	LOCATION	SERVICE HOURS	POPULATION SERVED	FEE	COMMENTS	CONTACT PERSON
--------	----------	---------------	-------------------	-----	----------	----------------

Sibling Support: Provides services to siblings through support groups, individual counseling or recreational activities.

Quality Services for the Autism Community (QSAC)	872 Atlantic Ave Baldwin	Meet first and third Monday of the month 7pm – 9pm	Parent and sibling support groups for families that have a child or sibling with Autism Spectrum Disorder and childcare for the child with autism	No Fee	Nassau & Suffolk Counties	Violeta Macias 516-301-5786 x1719 vmacias@qsac.com
--	-----------------------------	---	---	--------	---------------------------	--



TOWN RECREATION

AGENCY	LOCATION	SERVICE HOURS	POPULATION SERVED	FEE	COMMENTS	CONTACT PERSON
--------	----------	---------------	-------------------	-----	----------	----------------

Town Recreation: Provides recreation and social activities to town residents with developmental disabilities.

Suffolk County Council Boy Scouts Special Needs Division 7 Scouting Blvd. Medford	Various sites in Suffolk	Days & Evenings Depending on the site	Ages: 6 years & up (Co-ed) Ages: 14 years & up Developmentally Disabled		Suffolk County Only Social & recreational activities that work on fostering life skills, self-sufficiency and good citizenship	Lauren Vlachos 631-924-7000 x 137 lauren.vlachos@scoutin.org
Town of Babylon Human & Therapeutic Services, Inc. 281 Phelps Lane, Room #200 North Babylon NY 11703	Town of Babylon Annex, 281 Phelps Lane, North Babylon NY Strike Ten Lanes, 849 Long Island Avenue, Deer Park NY	Evenings Mondays, Tuesdays & Fridays	Ages: 16 years & up Developmentally Disabled	registration fee varies	Transportation provided (if eligible): Arts & crafts, bowling, gym night, & dance (monthly) Accepts individuals enrolled in self direction	Claire McKeon 631-422-7660 cmckeon@townofbabylon.com Laura Wexelbaum 631-893-1050 lwexelbaum@townofbabylon.com Main # 631-893-1050
Town of Brookhaven Dept. Of Parks, Recreation & Sports & Cultural Resources 286 Hawkins Rd. Centereach, NY	Various sites in Town of Brookhaven	Evenings & Saturdays	Ages: 15 years & up Developmentally Disabled	Activity Based Fee	Bowling, swimming, dances & other activities Accepts individuals enrolled in self direction	Elaine Gallagher 631-451-6108 egallagher@brookhavenny.gov
Town of Hempstead Dept. Of Recreation (Anchor) 630 Lido Blvd Lido Beach	Camp Anchor Town Park at Lido Beach	Mon – Fri 9am-3pm 6 week in summer - July & August	Ages: 5 years & up Developmentally Disabled	\$125 registration fee	Transportation provided	General # 516-431-6946 Maryann Hanson 516-801-5644 mhanson@tohmail.org

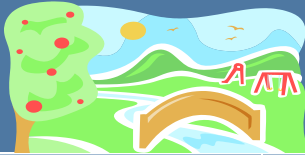


TOWN RECREATION

AGENCY	LOCATION	SERVICE HOURS	POPULATION SERVED	FEE	COMMENTS	CONTACT PERSON
--------	----------	---------------	-------------------	-----	----------	----------------

Town Recreation: Provides recreation and social activities to town residents with developmental disabilities.

Town of Hempstead Dept. Of Recreation (Anchor)630 Lido Blvd Lido Beach	School Year Recreation Programs (fall, winter, spring)	Mon-Fri Afternoon & evenings (call) hours vary Saturdays - (Oct-May) 9-3pm	Ages: 5 years & up, Developmentally Disabled	\$60 fee Saturday \$20 fee (after school)	Transportation provided (Saturdays)	Maryann Hanson 516-801-5644 mhanson@tohmail.org
Town of North Hempstead Dept. Of Parks & Recreation 201 IU Willets Road Albertson	Clinton G. Martin Park Recreation Center Marcus Ave. & New Hyde Park Rd. New Hyde Park	Sept.- June Saturdays 9am-3pm July & August - Tues.- Sat. 9am-3pm	Ages: 8 & up Developmentally Disabled	No Fee	Arts & Crafts, swimming, special events, field and summer camp Must live in North Hempstead	Barry Tussman 516-465-1529 Btussman@viscardicenter.org Estefany Garay 516-869-2492 garaye@northhempsteadny.gov Elizabeth Haft 516-465-1496 ehaft@viscardicenter.org
Town of Huntington Department of Parks & Recreation Town Hall 100 Main Street Huntington	Young Teen Program Maplewood Elementary Summer Camp Camp Bright Star	Saturdays Oct - June 10:30am-1:30pm 6 weeks M-F July-August 9am - 2:30pm	Ages:12-25 years Developmentally Disabled/ Autism Ages: 6 - adult Developmentally Disabled	Yes	Saturday Recreation Program \$80 for resident \$110 for non-resident Summer Camp \$270 for resident \$600 for non-resident	Bill Musto, Deputy Director 631-351-3071 WMusto@huntingtonny.gov Young Teen Program Coordinator: Toni Neuschaefer ttn812@aol.com



TOWN RECREATION

AGENCY	LOCATION	SERVICE HOURS	POPULATION SERVED	FEE	COMMENTS	CONTACT PERSON
--------	----------	---------------	-------------------	-----	----------	----------------

Town Recreation: Provides recreation and social activities to town residents with developmental disabilities.

Town of Islip Department of Human Services	Dance only @ David Sanders Dance 4110 Sunrise Highway Oakdale	Fridays 2 sessions per day Sep - June	Ages: 6-21 years Developmentally Disabled	No Fee	Modern Dance Program Ages 6-13 5-6pm Ages 14-21 6-7pm	Tim Mare 631-224-5320 youthbureau@islipny.gov
Town of Oyster Bay Department of Community & Youth Services Group Activities Program (GAP) 977 Hicksville Rd., Massapequa	Syosset-Woodbury Community Center 7800 Jericho Tpke. Woodbury & North Massapequa Community Center 214 N Albany Ave. Massapequa Summer Day Camp - M. R. Post Community Park 451 Unqua Rd. Massapequa Syosset-Woodbury Community Center 7800 Jericho Tpke.	Oct. - May Evenings & Saturdays Summer day camp	Ages: 5 years & up Developmentally Disabled - 4:1 Ratio, free of behavioral issues	\$150	Arts & Crafts, sports, dancing, games, bowling, swimming, drama groups 6 week, summer day camp & evening summer program, Saturday and Saturday evening respite 1x a month, field trips Accepts individuals enrolled in self direction	Mary Hurst 516-797-7948 mhurst@oysterbay-ny.gov
Town of Oyster Bay Department of Community & Youth Services Group Activities Program (GAP)	Syosset-Woodbury Community Center 7800 Jericho Tpke.	Fridays 6:30pm-8:30pm October - May	Ages: 5 - 20 years Autism. 2:1 Ratio, free of behavioral issues	No Fee except for field trips	Arts & crafts, dancing, bowling, and other activities Field trips are planned once a month	Mary Hurst 516-797-7948 mhurst@oysterbay-ny.gov



TOWN RECREATION

AGENCY	LOCATION	SERVICE HOURS	POPULATION SERVED	FEE	COMMENTS	CONTACT PERSON
--------	----------	---------------	-------------------	-----	----------	----------------

Town Recreation: Provides recreation and social activities to town residents with developmental disabilities.

977 Hicksville Rd., Massapequa	Woodbury & North Massapequa Community Center 214 N Albany Ave. Massapequa				Accepts individuals enrolled in self direction	
Town of Smithtown Recreation Department 495 Landing Ave. Smithtown, NY 11787	Various schools in Smithtown	Monday and Tuesday 6pm – 8pm Thursday Hours vary	Ages: 16 years & up Developmentally Disabled	No Fee	Socials, arts & crafts, field trips, bowling, swimming, Plays, movies	Sue Cappelmann 631-360-7646 (leave message) suecapp@optonline.net



VOUCHER REIMBURSEMENT PROGRAM

AGENCY	LOCATION	SERVICE HOURS	POPULATION SERVED	FEE	COMMENTS	CONTACT PERSON
--------	----------	---------------	-------------------	-----	----------	----------------

Voucher/Reimbursement: Families are reimbursed for purchased goods or services for their developmentally disabled person which cannot be funded through other resources. Services in the grant are not reimbursable.

Association for the Help of Retarded Children of Nassau County (AHRC Nassau) & (Citizen's Inc.)	115 E. Bethpage Road Plainview	9am-5pm	Developmentally Disabled Children & Adults	No Fee	Nassau County Only Reimbursement for respite & other services & goods which cannot be funded through other resources Does not accept individuals enrolled in self-direction	Lenny Giarraputo 516-293-2016 x5303 lgiarraputo@ahrc.org
Association for the Help of Retarded Children of Suffolk County (AHRC Suffolk)	2900 Veterans Memorial Hwy Bohemia	8:30am- 4:30pm	Developmentally Disabled Children & Adults	No Fee	Suffolk County Only Payers of last resort for any goods & services Does not accept individuals enrolled in self-direction	Lisa Basile 631-585-0100x535 LBasile@suffahrc.org
Angela's House Medically Frail Children	PO Box 5052 Hauppauge	Monday through Friday 9am-5pm	Medically frail, chronically ill, technology dependent and developmentally disabled	No Fee	Nassau & Suffolk Counties Reimbursement for services & goods which cannot be funded through other resources Does not accept individuals enrolled in self-direction	Nicole Johnson 631-979-2620x5 NJohnson@angelashouse.org
Developmental Disabilities Institute (DDI)	90 Air Park Drive Ronkonkoma	Monday through Friday 8am-12pm	All Ages Developmentally Disabled	No fee	Nassau & Suffolk Counties Project "SOAR"- In-Home Respite Reimbursement that cannot be funded	Christine Racca 631-580-4004 christine.racca@ddiny.org



VOUCHER REIMBURSEMENT PROGRAM

AGENCY	LOCATION	SERVICE HOURS	POPULATION SERVED	FEE	COMMENTS	CONTACT PERSON
--------	----------	---------------	-------------------	-----	----------	----------------

Voucher/Reimbursement: Families are reimbursed for purchased goods or services for their developmentally disabled person which cannot be funded through other resources. Services in the grant are not reimbursable.

					through other resources. Does not accept individuals enrolled in self-direction	
Family Residences & Essential Enterprises, Inc. (FREE)	191 Sweet Hollow Rd Old Bethpage	Mon.-Fri. 9am-5pm	All Ages Developmental Disabilities & Autism Spectrum Disorder	No Fee	Suffolk County Reimbursement program for families of DD children for non-Medicaid reimbursable expenses and extraordinary expenses due to the persons disability Does not accept individuals enrolled in self-direction	Doreen Baxter 631-273-1300 x3557 DBaxter01@familyres.org Robin Stone 516-870-1685 RStone@familyres.org
Head Injury Association (HIA)	300 Kennedy Drive Hauppauge	Mon.-Fri. 9am-5pm	All Ages Traumatic Brain Injury & Developmentally Disabled	No Fee	Reimbursement for goods and services, Respite, Camp, etc. Does not accept individuals enrolled in self-direction	Carla Fuller 631-543-2245, ext. 4068 cfuller@headinjuryassoc.org
The Marion and Aaron Gural JCC	207 Grove Avenue Cedarhurst	Mon.-Fri. 9am – 5pm	Infant to elderly Developmentally Disabled	No Fee	Nassau County. Wheelchair Accessible. Reimbursement for respite, camp, & other goods & services that cannot be funded through other means.	Amy Feldman 516-569-6733 amy.feldman@guraljcc.org



VOUCHER REIMBURSEMENT PROGRAM

AGENCY	LOCATION	SERVICE HOURS	POPULATION SERVED	FEE	COMMENTS	CONTACT PERSON
--------	----------	---------------	-------------------	-----	----------	----------------

Voucher/Reimbursement: Families are reimbursed for purchased goods or services for their developmentally disabled person which cannot be funded through other resources. Services in the grant are not reimbursable.

					Hebrew & Russian speakers available. Does not accept individuals enrolled in self-direction	
Long Island Developmental Disabilities Regional Office (LIDDRO)	415A Oser Ave. Hauppauge	8am-4:30pm	All Ages Developmentally Disabled	No Fee	Nassau & Suffolk Counties Reimbursement for services/goods Fiscal year is April 1 st to March 31 st and receipts can only be accepted within that time frame. The LIDDRO approves families only once. Does not accept individuals enrolled in self-direction	Mark Vernon 631-416-3932 Mark.f.vernon@opwdd.ny.gov
SCO Family of Services	164 3 rd Avenue, Brentwood	Mon.-Fri. 9am-5pm	Children & Adults Developmentally Disabled	No Fee	Nassau & Suffolk Counties Reimbursement for goods and services	Peggy Telesca 631-639-3730 patelesca@sco.org
United Cerebral Palsy of Suffolk County (UCP of Suffolk)	250 Marcus Blvd. Hauppauge	Mon. – Fri. 8:30am – 4:30pm	Children & Adults Developmentally Disabled	No Fee	Suffolk County Only Reimbursement for goods and services Does not accept individuals enrolled in self direction	Courtney Collins 631-232-0011 ext. 520 ccollins@ucp-suffolk.org



VOUCHER REIMBURSEMENT PROGRAM

AGENCY	LOCATION	SERVICE HOURS	POPULATION SERVED	FEE	COMMENTS	CONTACT PERSON
--------	----------	---------------	-------------------	-----	----------	----------------

Voucher/Reimbursement: Families are reimbursed for purchased goods or services for their developmentally disabled person which cannot be funded through other resources. Services in the grant are not reimbursable.

United nCerebral Palsy of Nassau County (UCP of Nassau)	380 Washington Ave Roosevelt	Mon. – Fri. 8:30am – 4:30pm	Children & Adults Developmentally Disabled	No Fee	Nassau County Only Reimbursement for goods and services Does not accept individuals enrolled in self-direction	Elissa Farina 516-378-2000 x416 EFarina@cpnassau.org Andrea DeLuca 516-378-2000 x385 adeluca@cpnassau.org



NON-MEDICAID SERVICE COORDINATION

AGENCY	LOCATION	SERVICE HOURS	POPULATION SERVED	FEE	COMMENTS	CONTACT PERSON
--------	----------	---------------	-------------------	-----	----------	----------------

Non-Medicaid Service Coordination: Short term service coordination to assist developmentally disabled individuals with the planning for and accessing of desired services and supports.

A-1 Universal Care, Inc.	255 Executive Drive, Suite 309, Plainview	Mon. – Fri. 8am – 4pm	Ages: 5-60 years Developmentally Disabled	No Fee	Nassau & Western Suffolk County Only. Short term service coordination for individuals with Developmental Disabilities who are not Medicaid eligible	Donna Harris 516-338-8777 Ext.12 dharris@a1universalcare.org
Adults & Children with Learning Disabilities (ACLD)	857 South Oyster Bay Rd Bethpage	Mon.-Fri. 9am-5pm	Adults & Children Developmentally Disabled	No Fee	Nassau & Suffolk Counties Short term service coordination for individuals with DD who are not Medicaid eligible.	Valerie Stammelman, 516-336-5909 x 207 stammelmanv@aclid.org
Angela's House Medically Frail Children	P.O. Box 5052 Hauppauge	Mon.-Fri. 9am-5pm	Developmentally Disabled children – medically frail, technology dependent & chronically ill	No Fee	Nassau & Suffolk Counties Also does Crisis NMSC Medically Frail, Technology Dependent, Chronically Ill and Developmentally Disabled 18 years or younger	Barbara Squillacoti 631-979-2620 Ext. 1 BSquillacoti@angelashouse.org
Center for Family Support, Inc.	110 Jericho Tpke, Suite 103 Floral Park	Mon. – Fri. Varied hours	Ages: 3 years & up Developmentally Disabled individuals without Medicaid	No Fee	Nassau & Suffolk Counties	Natasha Salazar 516-292-3000 x401 NSalazar@cfsny.org



NON-MEDICAID SERVICE COORDINATION

AGENCY	LOCATION	SERVICE HOURS	POPULATION SERVED	FEE	COMMENTS	CONTACT PERSON
Non-Medicaid Service Coordination:	Short term service coordination to assist developmentally disabled individuals with the planning for and accessing of desired services and supports.					
Center for Rapid Recovery (CRR)	312 Greenwich St Hempstead	Mon.-Fri. 9am-5pm	All ages Developmentally Disabled	No Fee	Nassau & Suffolk Counties Short Term service coordination for DD individuals who do not have Medicaid Spanish Speakers Available	Cassandra Woods 516-292-6449 x113 cwoods@rapidrecovery.org Andrea Newalis 516-292-6449 x110 anewalis@rapidrecovery.org
Research Foundation for Stony Brook University	SUNY Stony Brook Health Sciences Center – level 11 Room 055	Mon.-Fri. 9am – 5pm	Families of children, adolescents and adults with developmental disabilities	No Fee	Suffolk County Only	Na Li Amandola 631-216-8137 Na.li@stonybrookmedicine.edu
East End Disability (EEDA)	107 Roanoke Avenue Riverhead	Mon.-Fri. 9am – 5pm	Children & Adults Developmentally Disabled	No Fee	Serves Individuals East of William Floyd Parkway. Provide Benefit and Entitlement services via telephone, email or office walk-in's. Linkage and referral.	Joy O'Shaughnessy 631-369-7345 x208 JoyO@eed-a.org
Economic Opportunity Council (EOC)	320 Carlton Avenue Suite 7800 Central Islip	Mon.-Fri. 9am – 5pm	Children & Adults Developmentally Disabled	No Fee	To provide NMSC for individuals with developmental disabilities, assist the families in determining the supports and services needed, assist	Simone Holder 631-666-6471 x602 sholder@eoc-suffolk.com



NON-MEDICAID SERVICE COORDINATION

AGENCY	LOCATION	SERVICE HOURS	POPULATION SERVED	FEE	COMMENTS	CONTACT PERSON
--------	----------	---------------	-------------------	-----	----------	----------------

Non-Medicaid Service Coordination: Short term service coordination to assist developmentally disabled individuals with the planning for and accessing of desired services and supports.

					with navigating the OPWDD, HCBS Waiver program and the Department of Social Services system and obtain Medicaid to be able to transition to Care Coordination.	
Innovative Resources for Independence (IRI)	191 Bethpage-Sweet Hollow Road Old Bethpage	Mon.-Fri. 9am – 5pm	Children & Adults Developmentally Disabled	No Fee	Nassau County	Sophia Lulgjuray 718-805-6796 x4107 Sophia.Lulgjuray@in-res.org Ana Koessler 718-805-6796 x4107 Ana.Koessler@in-res.org
Kulanu	124 McGlynn Place Cedarhurst	Mon. – Thurs. 9am – 5pm Fridays 9am – 2pm Evening hours by appointment	Individuals with Developmental Disabilities, Autism Spectrum Disorders	No Fee	Nassau County	Farrah Leconte 516-569-3083 X285 farrahL@kulanukids.org
Long Island Advocacy Center	490 Wheeler Road Hauppauge	Mon.-Fri. 9am – 5pm	Children & Adults With Developmental Disabilities and their families	No Fee	Nassau & Suffolk Does not accept individuals enrolled in self direction	Anita Durney 631-234-0467 x20 adurney@theliac.org
Mill Neck Services for Deaf Adults	P.O. Box 193 Frost Mill Road Mill Neck	Mon.-Fri. 8am – 4pm	Deaf, Developmentally Disabled, all ages	No Fee	Nassau & Suffolk Counties Accepts individuals enrolled in self direction	Loretta Murray 516-922-3818 deafesg@millneck.org John Saal 516-322-4003



NON-MEDICAID SERVICE COORDINATION

AGENCY	LOCATION	SERVICE HOURS	POPULATION SERVED	FEE	COMMENTS	CONTACT PERSON
--------	----------	---------------	-------------------	-----	----------	----------------

Non-Medicaid Service Coordination: Short term service coordination to assist developmentally disabled individuals with the planning for and accessing of desired services and supports.

						jsaal@millneck.org
United Cerebral Palsy Association of Greater Suffolk County, Inc. (UCP of Suffolk) Partners in Transition Program	250 Marcus Blvd. Hauppauge	Mon-Fri 8:30am-4:30pm	Students 2 years prior to school exit who are eligible or potentially eligible for services under OPWDD and want to pursue a vocational/employment goal. Assessment and planning for successful transition to adult services.	No Fee	Assists High School Students and families with vocational planning and accessing needed services	Joan Sarrica 631-232-0011 jsarrica@ucp-suffolk.org